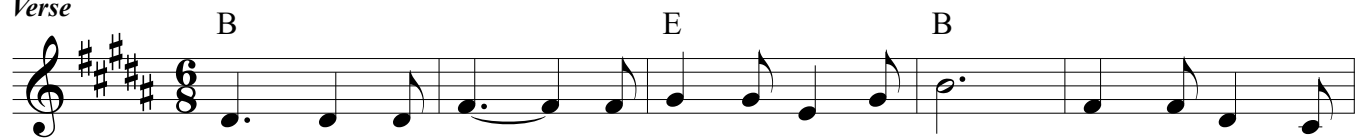


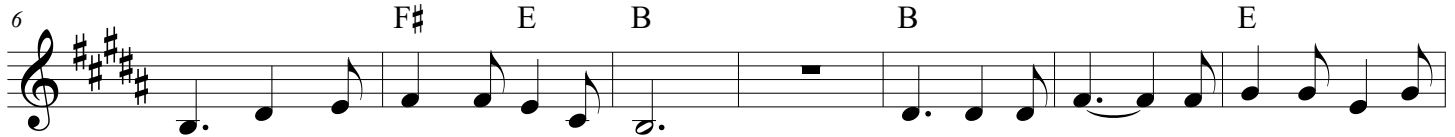
Dar ān shabe moghadaso foruzān (Tamjid konid) (B)

Lyrics: Palacide Cappeau Melody: Adolph Adam

Verse



1.dar ān sha - be mo - gha - da - so fo - roo - zān mon - ji - ye
2.hok - me ma - sih mo - ha - ba - te ha - ghi - ghist en - ji - le
3.chiz - hā - ye koh - ne i - nak dar - go - zash - te be lot - fe



man mo - lood gasht dar in ja - hān tesh - ne - gā - ne ā - lam dar en - te -
oo mozh - de - ye sa - lā - ma - tist dar gho - va - te nā - me ma - sih sha -
oo ha - me - chiz tā - ze sho - de ma' - ni - o at - re zen - de - gi dar



zā - rash tā oo zā - her sha - vad dar ja - lā - lash ka - la - me
vad door gha - mo an - dooh ān - gah bakh - shad so - roor so - rood - hā -
i - sāst oo meh - va - re khosh - bakh - ti - ye sho - māst dar oo bā -



jesm gar - di - do ā - she - kār shod noo - ri a - zim bar mā to - loo ne - mood
ye shād - ma - ni ne - ma - te oost ha - me az rah - ma - to fey - ze kho - dāst
shad ja - vā - be har ta - ghā - za chon oost ye - gā - ne far - zan - de kho - dā

Chorus



tam - jid ko - nid so - rood - hā be - sa - rā - yid an -



dar ho - zoo - re ān mo - lood zā - noo za - nid an -



dar ho - zoo - re ān mo - lood zā - noo za - nid