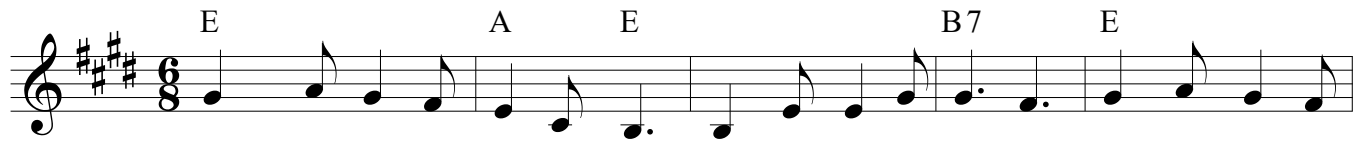


# Bin bar salib isā rā (E)

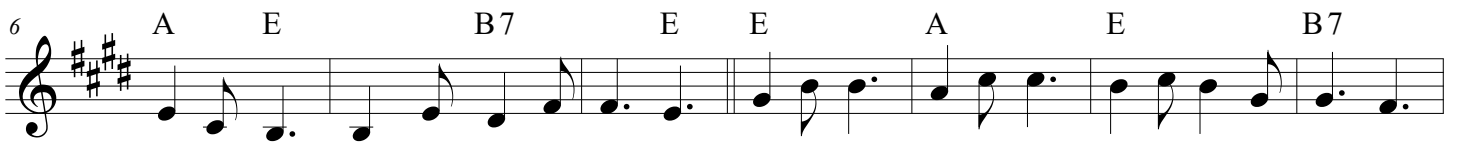
Original song: 'Jesus keep me near the cross' by Fanny Crosby

## Verse



1. bin bar sa - lib i - sā rā ān far - zan - de kho - dā bah - re go - nā -  
2. khoo - nash be - shos - te jor - mam az meh - ro az ra - fat nā - mash da - had  
3. posh - to pa - nā - he man oost ham rah - ba - ro mo - ein di - gar che gha -

## Chorus



hā - ne man shod mas - loob az va - fā nā - me oo a - ziz ast jān rā ko - nad shā - dān  
ta - sa - li az fey - zo az rah - mat  
mi ma - rāst dar roo - ze vā - pa - sin



an - vā - re rah - ma - te oo del rā ko - nad tā - bān